

# LINER INSTALLATION (POLY LINER)



**CORRPAKBPS**

# LINER INSTALLATION

1. Before you have installed the liner in the container make sure to fill out the bulk trailer/container inspection (DOC PAC 1-013) any damage or potential contamination should be reported immediately to the supervisor. Containers with bad flooring, damage or without conditions to place bars will be rejected. All operations will be stopped until further instructions from the CSR, who will be in contact with the customer.



# LINER INSTALLATION



2. Sweep the container out prior to installation of the liner, (all sharp nails, etc.) on the container floor and walls which could damage the liner are to be removed

3. Roll out and unfold the liner from the bottom to the front of the container, do not drag the liner into the container to prevent any damage to the liner. And unfold side to side.



# LINER INSTALLATION



4. Put bottom bar into the sleeve and insert the bar to the front channel of the container.



5. Tie the top corner of the liner with the top finger bars of the container, and tie the top corner of the liner with the u shape bolt on the side of the container.



This is how it looks from the front side of the container



**CORRPAKBPS**

# LINER INSTALLATION



6. Blow the liner and tie up the sleeve after finishing this process step.



7. Tie up both sides of the liner with the blue cords pointing out the door of the container (is not necessary to tie all of them; the goal is to lift up the liner that can barely touch the floor). Do not tie bottom floor blue tie cords to lashings on floor of container.



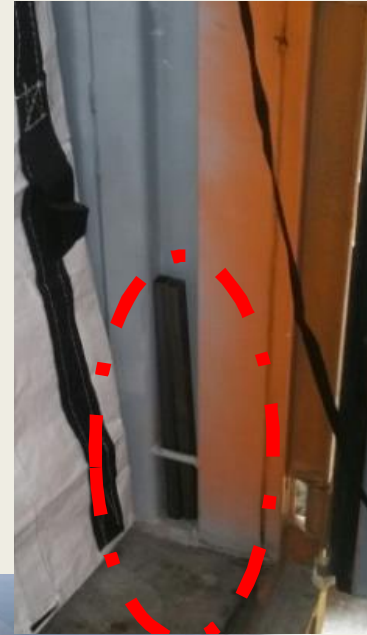
This is how it looks after tying both sides.



**CORRPAKBPS**

# LINER INSTALLATION

8. Tie the top corners of the liner using the straps.



9. Put the front bars through the loops on both sides and snap inside the braces; starting from the bottom, then the top bar and ending with the two middle ones; making sure we have the small side bars in place. After doing this make a double knot to the strap above the buckle. The bottom of the first steel bar should be a distance of minimum 1 foot from the floor .



**CORRPAKBPS**



# LINER INSTALLATION



10. Hook the elastic bands from the top of the liner to the container.



11. Place a green label on the front of the container to indicate that the liner is installed and no staff inside.



## IMPORTANT:

The container cannot be moved until the label is placed on the container, this is a safety precaution to prevent any injury or incident from taking place.